



# ABO valve

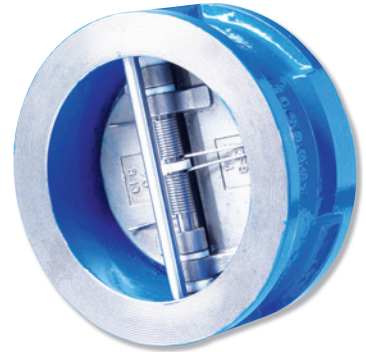
ABsOlute flow control

## SERIES 700 - Dual plate check valves

// DN: 50 - 1400 (2" - 48")

// PN 10, 16

// Waste water, sewage,  
thick and viscous liquids, water



## SERIES 800 – Swing check valves

// DN: 50 - 300 (2" - 12")

// PN 10, 16

// Water, heating systems, oils



# CHECK VALVES

# SERIES 700 - DUAL PLATE CHECK VALVES

## BASIC INFORMATION

### Range:

- DN: 50 - 1200 (2" - 48")
- PN: 10, 16 bar

### Temperature range:

- 25°C to + 125°C (depending on execution)

### Applications:

- Waste water
- Sewage
- Water treatment
- Potable water
- Thick and viscous liquids

## STANDARDS

### LEAK TEST:

- EN 12266-1, CLASS A
- ISO 5208, CLASS A

### FACE TO FACE ACC.:

- EN 558

### CONNECTION BETWEEN FLANGES:

- EN ISO 6708
- EN 1092-1,2

### MARKING

- EN 19

### WORKING STANDARD:

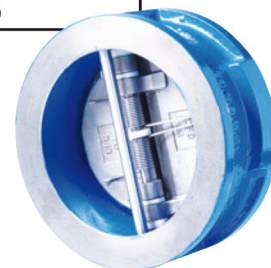
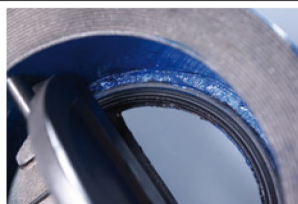
- EN 12334

## GENERAL CHARACTERISTICS

- Compact valve
- Preferred vertical installation in pipeline
- Short face-to-face connection with good hydraulic performance
- Mounting between flanges
- Low head loss
- Stainless steel spring to avoid fluid hammer

## MATERIALS

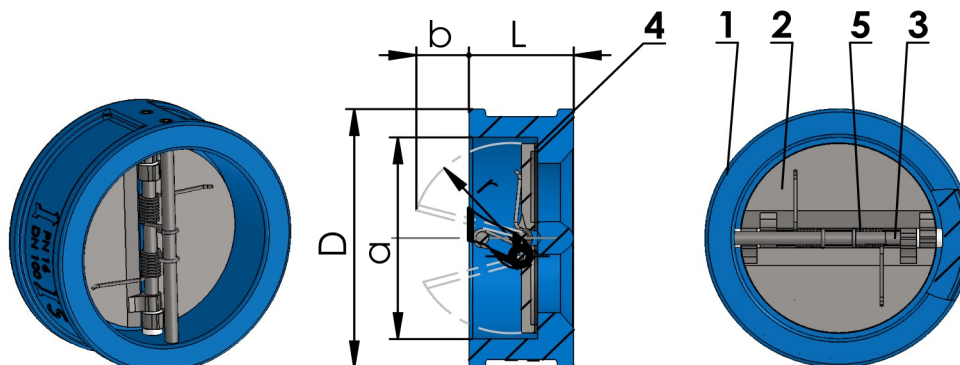
1	Body	Ductile iron 0.7040 (GGG40)
2	Plate	Stainless steel 1.4308 (CF8)
3	Stem	Stainless steel 1.4301 (AISI 304)
4	Seat	NBR (- 10°C + 100°C)
		EPDM (- 25°C + 125°C)
5	Spring	Stainless steel 1.4301 (AISI 304)



## DIMENSIONS

DN		L	PN 10	PN 16	a	b	r	Weight (kg)
mm	inch		D	D				
50	2"	43	107	107	46	7,6	28,8	1,5
65	2"1/2	46	129	129	58	12,9	33	2,4
80	3"	64	142	142	66	14	40	3,8
100	4"	64	162	162	94	23	53,1	4,7
125	5"	70	192	192	120	32,8	65,7	6,3
150	6"	76	218	218	144,6	42,6	78,6	9,3
200	8"	89	273	273	198	67,4	104,4	15,2
250	10"	114	328	328	244	72	127	26
300	12"	114	378	378	283,9	100	148,3	40,7
350	14"	127	438	438	333	121	172,5	55
400	16"	140	489	489	381	136,8	197,5	75
450	18"	152	539/555	539/555	420	147,7	217,8	118
500	20"	152	594	594	475,3	179,5	244,6	173
600	24"	178	695	695	585	220	301,5	200
700	28"	229	810	810	690	250	352	260
800	32"	241	915	915	780	290	395	340
900	36"	241	1015	1015	850	332	445	520
1000	40"	300	1124	1124	940	332	483	760
1200	48"	350	1340	1340	1150	442	601	1200

Dimensions mentioned in mm, weight in kg.



# SERIES 800 - SWING CHECK VALVES

## BASIC INFORMATION

### Range:

- DN: 50 - 300 (2" - 12")
- PN: 10, 16 bar

### Temperature range:

- 25°C to + 125°C (depending on execution)

### Applications:

- Water treatment
- Heating systems
- Oils

## STANDARDS

### LEAK TEST:

- EN 12266-1, CLASS A
- ISO 5208, CLASS A

### CONNECTION

#### BETWEEN FLANGES:

- EN 1092-1,2
- EN ISO 6708

### MARKING:

- EN 19

### WORKING STANDARD:

- EN 12334

## GENERAL CHARACTERISTICS

- Easy structure and mounting
- Direct installation between DIN flanges
- Short construction length
- Low weight

## MATERIALS

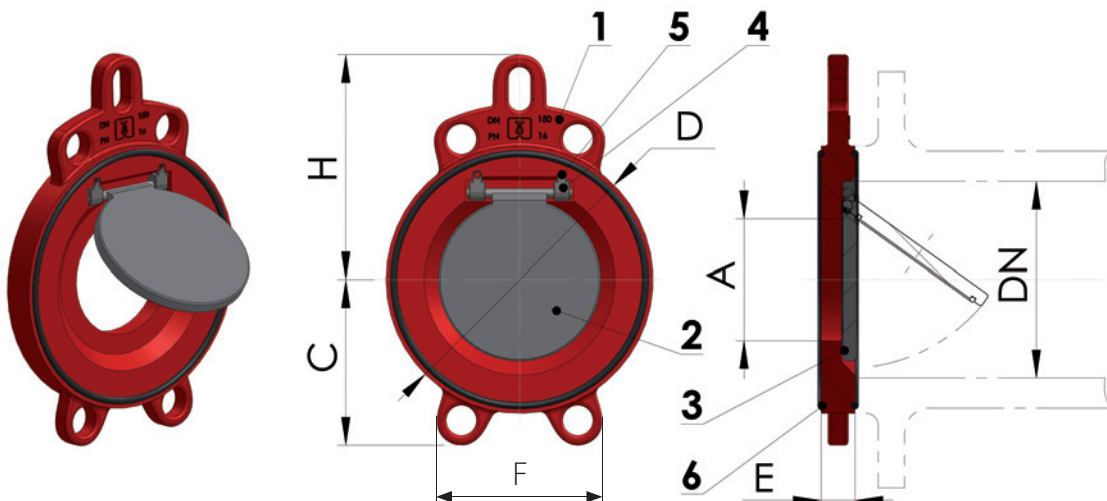
1	Body	Ductile iron 0.7040 (GGG40)
2	Disc	Stainless steel 1.4308 (CF8)
3	Seat	1 – NBR: marking 814 (- 10°C + 100°C)
		2 – EPDM: marking 824 (- 25°C + 125°C)
		On request special materials (Viton, Silicone)
4	Holder	Stainless steel 1.4308 (CF8)
5	Bolt	Stainless steel 1.4301 (AISI 304)
6	Flange sealing	Elastomer



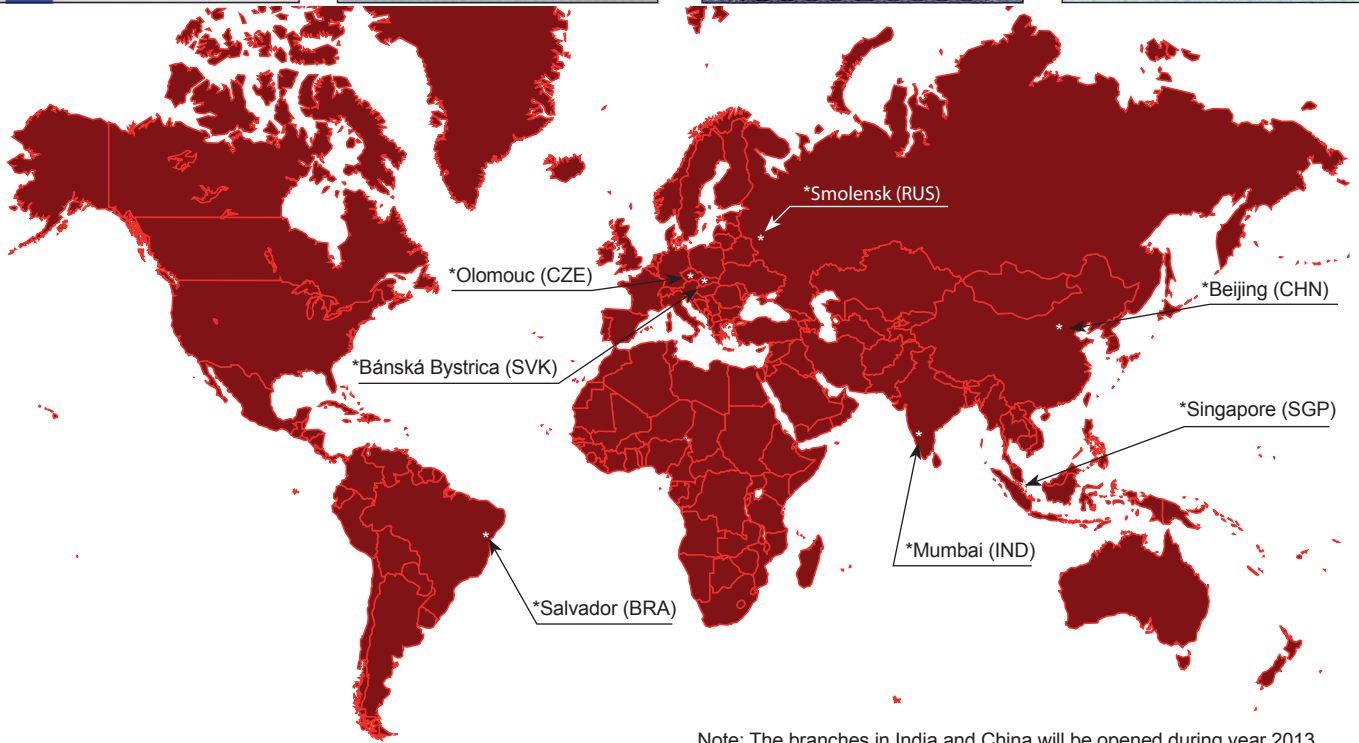
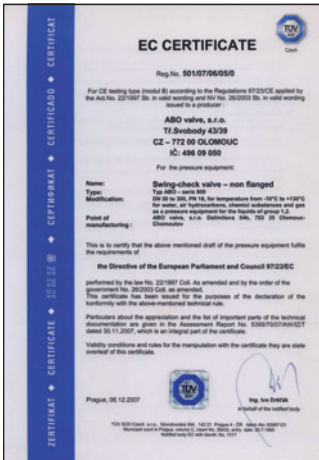
## DIMENSIONS

DN		A	C	D	E	F	H	Weight (kg)
mm	inch							
50	2"	22	64	99	18	130	125	1,3
65	2 1/2"	38	72	118	20	142	135	1,8
80	3"	44	93	132	20	150	142	2,3
100	4"	70	107	158	20	112	157	2,6
125	5"	95	119	184	22	120	169	3,5
150	6"	114	133	212	22	137	185	4,5
200	8"	140	166	268	22	159	214	7
250	10"	185	198	319	29	141	246	12
300	12"	216	234	370	38	162	284	21,5

Dimensions mentioned in mm, weight in kg.



# CERTIFICATES



Note: The branches in India and China will be opened during year 2013.

Note: Choice of the seat and disc materials for various media will be recommended upon specific enquiry. The above mentioned max. temperatures for each material of seat are accepted only for a specific medium and short time. Please always consult seat material selection with the manufacturer.



EUROPEAN UNION  
EUROPEAN REGIONAL DEVELOPMENT FUND  
INVESTMENT IN YOUR FUTURE

The information in this brochure is indicative only. Binding specification will be provided in the offer. ABO valve accepts no liability for damages caused by bad interpretation or use of the information included in this brochure.

18. 2. 2013

Data subject to change.

**Company HQ – Czech Republic:**  
ABO valve, s.r.o.  
Dalimilova 285/54, 783 35 Olomouc  
Tel: +420 585 202 226, +420 585 224 087  
Email: export@abovalve.com  
www.abovalve.com

**Slovakia:**  
ABO Slovakia, s.r.o.  
Banská Bystrica  
Tel: +421 484 145 633  
Email: aboslovakia@aboslovakia.sk  
www.aboslovakia.sk

**Russia:**  
ABO ARMATURA Ltd.  
Smolensk  
Tel: +7 4812 31 28 27  
Email: aboarmatura@yandex.ru  
www.aboarmatura.ru

**Singapore:**  
ABO Singapore Pte. Ltd.  
Singapore  
Tel: +65 6383 4368  
Email: lsw@abovalve.com  
www.abovalve.com.sg

**Brazil:**  
ABO Brasil  
Simões Filho - Salvador  
Tel: +55-71-8787-4599  
Email: bernardo@abovalve.com  
www.abovalve.com

**China:**  
ABO China Representative  
Wen XuYang  
Tel: +86 13601522831  
Email: wen@abovalve.com  
www.abovalve.com