

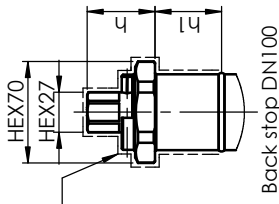
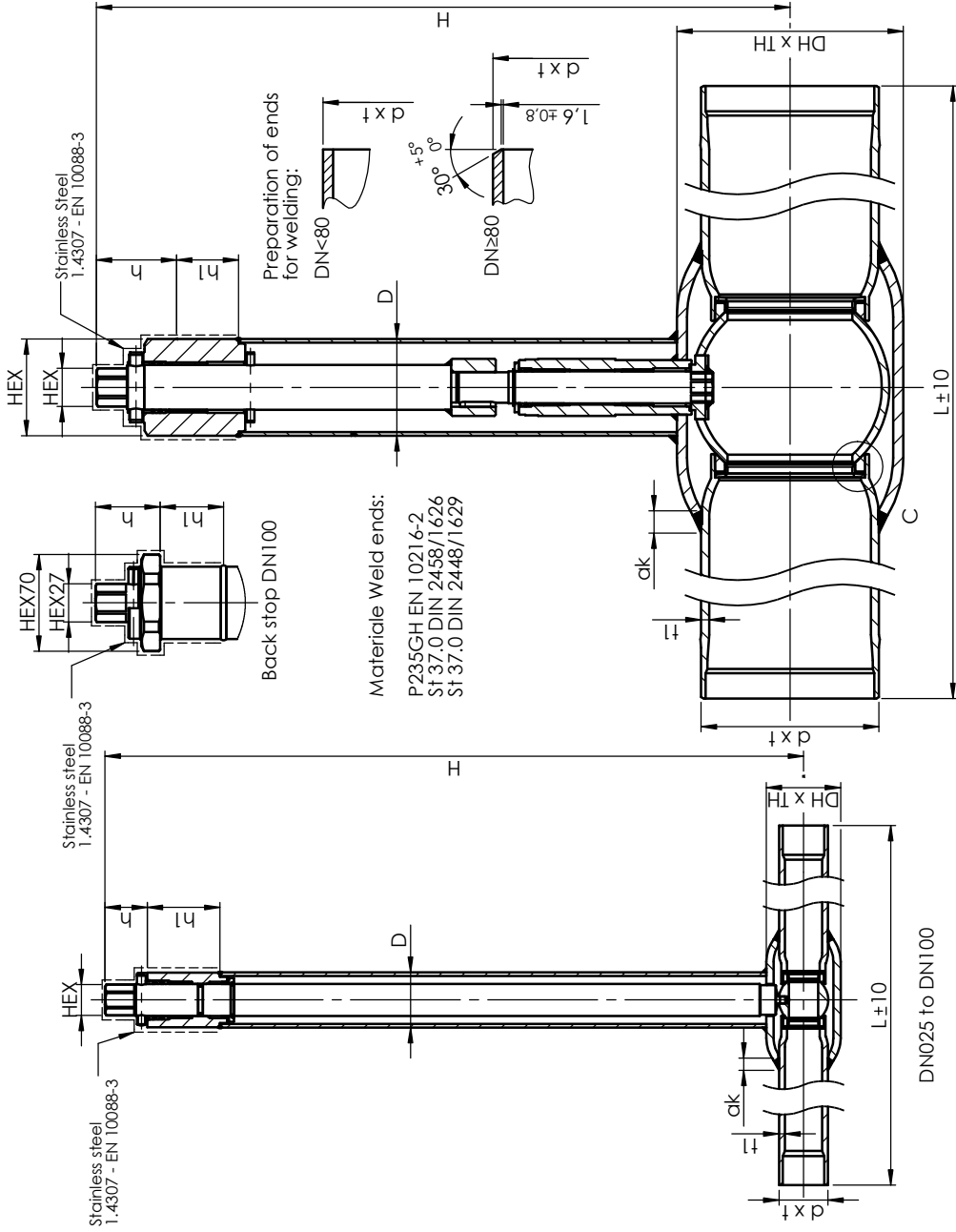
Design and constiutional testing according to EN 488.

F = $\sigma_{yp} \times A_s$ [N]

σ_{yp} = 300 N/mm

A_s = Cross-sectional area according to EN 488 Tabel 1

Pressure test according to EN 12666.



Back stop DN100

Material weld ends:

- P235GH EN 10216-2
- St 37.0 DIN 2458/1626
- St 37.0 DIN 2448/1629

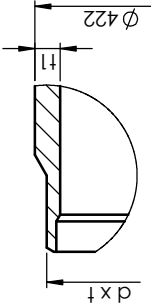
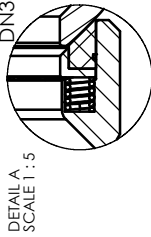
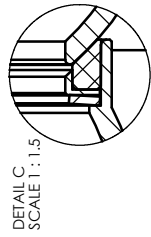
DN025 to DN100

DN125 to DN300

DN350 to DN500

*11: Additional wall thickness for Branch connection.

Catalog no.:	DN	d x t	*11	DH x TH	dk	H	h	h1	HEX	D	L
67102025S260900	025	33.7x2.6	4.0	51.0x5.0	8.4	480	29	50	19	38.0	1510
67102030S261000	032	42.4x2.6	4.0	57.0x5.6	9.6	485	29	50	19	38.0	1510
67102040S261100	040	48.3x2.6	5.6	76.1x5.6	9.7	493.5	29	50	19	38.0	1510
67102050S261200	050	60.3x2.9	5.0	88.9x6.3	10.9	500	29	50	19	38.0	1510
67102065S261300	065	76.1x2.9	5.0	108.0x6.3	11.1	505	29	50	19	38.0	1510
67102080S261400	080	88.9x3.2	5.6	127.0x7.1	12.3	515	29	50	19	38.0	1510
67102100S261500	100	114.3x3.6	6.3	152.4x8.0	14.0	525	51	50	27/70	57.0	1510
67102125S261600	125	139.7x3.6	6.3	177.8x8.0	17.5	545	63	50	27/70	76.1	1510
67102150S261700	150	168.3x4.0	7.1	219.1x10.0	20.0	565	63	50	50/90	76.1	1510
67102200S261800	200	219.1x4.5	8.0	267.0x11.0	22.5	585	88	50	50/90	76.1	1510
67102250S261900	250	273.0x5.0	8.0	355.6x14.2	21.0	625	95	50	50/90	114.3	1510
67102300S092200	300	323.9x5.6	8.8	457.0x16.0	24.0	664	95	50	50/90	127.0	1810
62102350.310	350	355.6x5.6	8.0	508.0x16.0	24.0	742	138	50	80/150	127.0	750
62102400.310	400	406.4x6.3	16.6	610.0x17.5	27.0	793	138	50	80/150	152.4	860
62102500.310	500	508.0x6.3	10.0	711.0x17.5	29.0	907	138	50	80/150	219.1	970



Sealing system DN025-DN250 Sealing system DN300-DN500 Welding end DN400

MATERIAL	Revised from 495	07/01/18	TCH
	UNSPECIFIED TOL. ANGLES ± 2° OTHER DIM. ± 0.2	DATE	Init
PART	Weight 7335.63	SCALE	1:10
	Weight 7335.63	DRAWING NUMBER	mhp
ITEM	BALLOMAX W/W HIGH STRESS PN25	APPR.	DATE: 29-09-2006
FOR PREINSULATION			

BROEN