



# Full lift safety valve with spring loading. (AIT)

Mod. 695 - 895 - 995 - 694 | EN



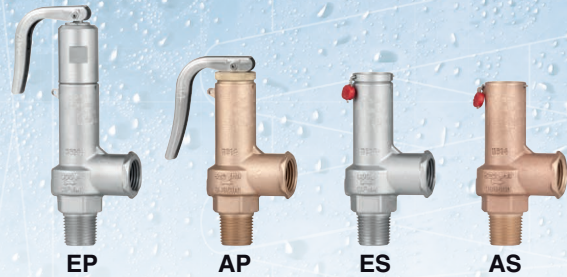
EP

AP

ES

AS

Model 695



EP

AP

ES

AS

Model 895



EP

AP

ES

AS

Model 995



EP

AP

ES

AS

Model 694

## Operation

The valve works as an automatic pressure releasing regulator activated by the static pressure existing at the entrance to the valve and is characterized by its ability to open, at the first proportional to the pressure increase, and after instantly and totally.

## Specifications

### Size

- 3/8" x 1/2" to 1" x 1" (695 - 895)
- 3/8" x 1/2" to 1/2" x 1/2" (995)
- 10 x 15 to 25 x 25 (694)

### Temperature range

- -196 °C to +260 °C

### Applications

- Gas, steam and liquids

### Materials

- Bronze
- Stainless steel

### Maximum pressure

- Up to 144 bar

## Normativa

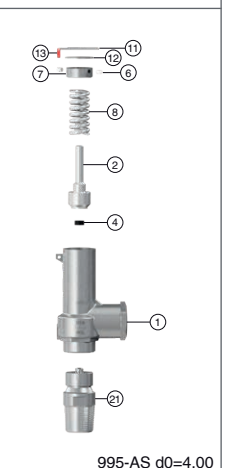
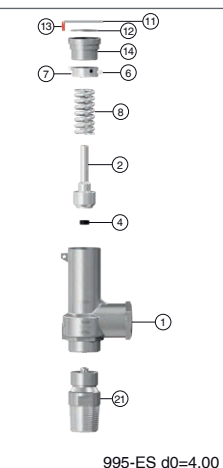
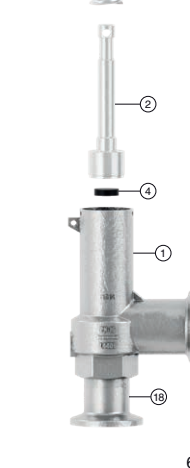
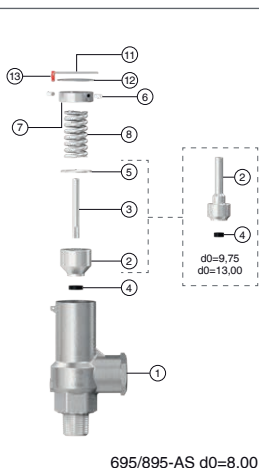
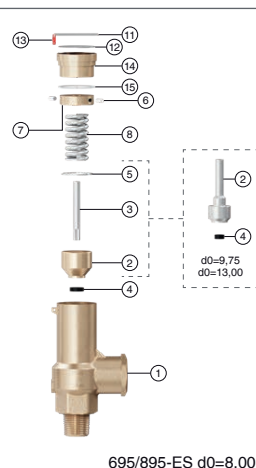
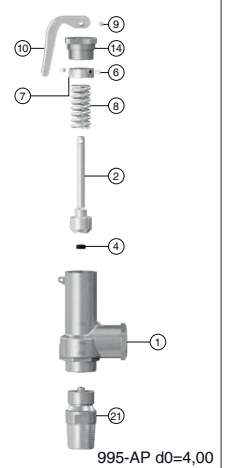
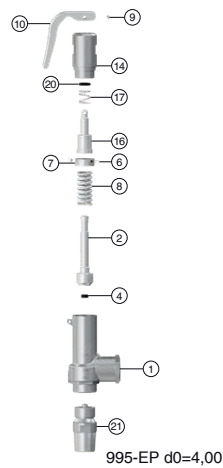
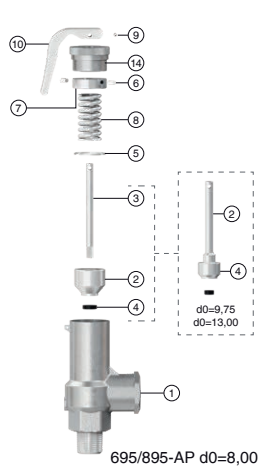
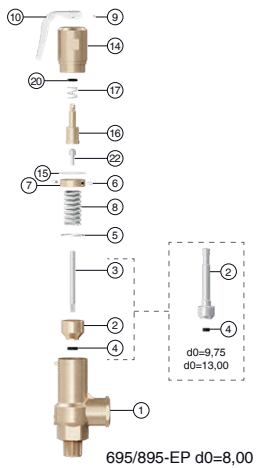
- PED 2014/68/EU
- UNE-EN ISO 4126-1
- UNE-EN ISO 4126-7
- UNE-EN ISO 228-1
- UNE-EN 12516-2
- ASME ISO 2852 (694)

## Certification

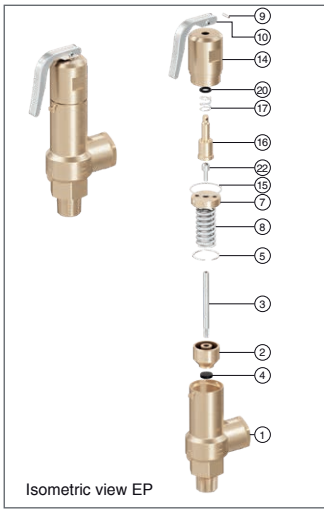


N.º PIECE	PIECE	MATERIAL	
		BRONZE	STAINLESS STEEL
1	Body	Bronze (EN-CC491K)	Stainless steel (EN-1.4408)
2	Plug	Brass (EN-CW617N)	Stainless steel (EN-1.4401)
3	Shaft	Stainless steel (EN-1.4305)	Stainless steel (EN-1.4305)
4	Seal	Silicone rubber	Caucho de silicona
		Fluorelastomer (Viton)	Fluorelastomer (Viton)
		PTFE (Teflon)	PTFE (Teflon)
		Perfluorelastomer (FFKM)	Perfluorelastomer (FFKM)
5	Limiter ring	Stainless steel (EN-1.4310)	Stainless steel (EN-1.4310)
6	End-stop	PTFE (Teflón)	PTFE (Teflon)
7	Spring press	Brass (EN-CW617N)	Stainless steel (EN-1.4305)
8	Spring	Stainless steel (EN-1.4310)	Stainless steel (EN-1.4310)
9	Clip	Stainless steel (EN-1.4310)	Stainless steel (EN-1.4310)
10	Lever	Stainless steel (EN-1.4301)	Stainless steel (EN-1.4301)
11	Sealing wire	Sealing wire	Sealing wire
12	Characteristic plate	Aluminium	Aluminium
13	Seal	Plastic	Plastic
14	Cap	Brass (EN-CW617N)	Stainless steel (EN-1.4305)
15	Hood coupling	PTFE (Teflon)	PTFE (Teflon)
16	Piston	Latón (EN-CW617N)	Stainless steel (EN-1.4305)
17	Piston Spring	Stainless steel (EN-1.4310)	Stainless steel (EN-1.4310)
18	Inlet clamp	-	Stainless steel (EN-1.4404)
19	Outlet clamp	-	Stainless steel (EN-1.4404)
20	O-ring	Fluorelastomer (Viton) (1)	Fluorelastomer (Viton) (1)
21	Seat	-	Stainless steel (EN-1.4401)
22	Screw cap	Stainless steel (EN-1.4305)	Stainless steel (EN-1.4305)

MODEL	R1 x R2	3/8" x 1/2" to 1" x 1"	
		PS	
695	OPERATING CONDITIONS	PRESIÓN [bar]	36
		MAXIMUM TEMPERATURE [°C]	200
		MINIMUM TEMPERATURE [°C]	-10
895	OPERATING CONDITIONS	PRESIÓN [bar]	36
		MAXIMUM TEMPERATURE [°C]	60
		MINIMUM TEMPERATURE [°C]	-10
995	OPERATING CONDITIONS	PRESIÓN [bar]	-
		MAXIMUM TEMPERATURE [°C]	-
		MINIMUM TEMPERATURE [°C]	-
694	OPERATING CONDITIONS	PRESIÓN [bar]	-
		MAXIMUM TEMPERATURE [°C]	-
		MINIMUM TEMPERATURE [°C]	-



(1) Mod. 895; Perfluorelastomer (FFKM)



## Full lift safety valve with spring loading (AIT) version EP.

### 1. Disassembly and assembly

#### 1.1 Disassembly

To replace the spring (8) or clean any of the internal components of the valve, proceed in the following manner:

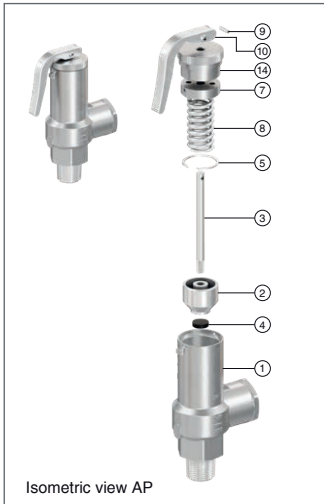
- A - Cut the seal thread (11) with pliers.
- B - Withdraw the fastener (9), using a punching tool, until the lever (10) comes free.
- C - Unscrew and extract the hood (14).
- D - Unscrew the piston (16) from the rod (3) and then the screw cap (22).
- E - Holding the rod (3), unscrew the spring press (7) until you note a releasing of the spring (8).
- F - Extract the spring (8).

#### 1.2 Assembly

- A - Enter the spring (8) through the upper part of the rod (3).
- B - Screw the spring press (7) holding the rod (3) and the screw cap (22).
- C - Adjust the set pressure with the spring press (7).
- D - Screw the piston (16) to the rod (3).
- E - Screw the hood (14).
- F - Place the lever (10) and fix it with the fastener (9).

### 2. Adjusting the firing pressure

- A - Proceed according to points 1.1.A, 1.1.B, 1.1.C, 1.1.D, 1.1.E.
- B - Proceed according to points 1.2.C, 1.2.D, 1.1.E, 1.1.F.



## Full lift safety valve with spring loading (AIT) version AP.

### 1. Disassembly and assembly

#### 1.1 Disassembly

To replace the spring (8) or clean any of the internal components of the valve, proceed in the following manner:

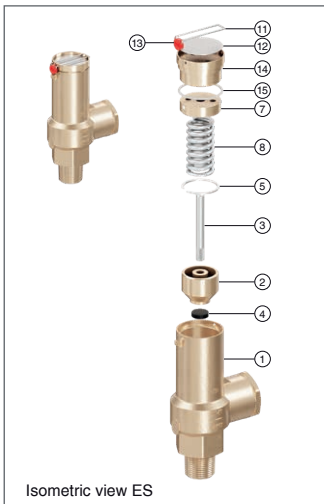
- A - Cut the seal thread (11) with pliers.
- B - Withdraw the clip (9), using a punching tool, until the lever (10) comes free.
- C - Unscrew and extract the hood (14).
- D - Holding the rod (3), unscrew the spring press (7) until you note a releasing of the spring (8).
- E - Extract the spring (8).

#### 1.2 Assembly

- A - Enter the spring (8) through the upper part of the rod (3).
- B - Screw the spring press (7) holding the rod (3).
- C - Adjust the set pressure with the spring press (7).
- D - Screw the hood (14).
- E - Place the lever (10) and fix it with the fastener (9)

### 2. Adjusting the firing pressure

- A - Proceed according to points 1.1.A, 1.1.B, 1.1.C, 1.1.D.
- B - Proceed according to points 1.2.C, 1.2.D, 1.1.E.



## Full lift safety valve with spring loading (AIT) version ES.

### 1. Disassembly and assembly

#### 1.1 Disassembly

To replace the spring (8) or clean any of the internal components of the valve, proceed in the following manner:

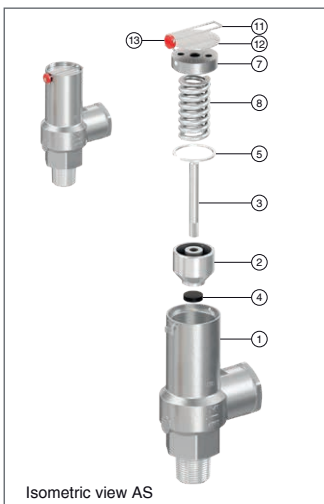
- A - Cut the seal thread (11) with pliers and extract the characteristic plate (12).
- B - Unscrew and extract the hood (14).
- C - Holding the rod (3), unscrew the spring press (7) until you note a releasing of the spring (8).
- D - Extract the spring (8).

#### 1.2 Assembly

- A - Enter the spring (8) through the upper part of the rod (3).
- B - Screw the spring press (7) holding the rod (3).
- C - Adjust the set pressure with the spring press (7).
- D - Screw the hood (14).

### 2. Adjusting the firing pressure

- A - Proceed according to points 1.1.A, 1.1.B, 1.1.C.
- B - Proceed according to points 1.2.C, 1.2.D..



## Full lift safety valve with spring loading (AIT) version AS.

### 1. Disassembly and assembly

#### 1.1 Disassembly

To replace the spring (8) or clean any of the internal components of the valve, proceed in the following manner:

- A - Cut the seal thread (11) with pliers and extract the characteristic plate (12).
- B - Holding the rod (3), unscrew the spring press (7) until you note a releasing of the spring (8).
- C - Extract the spring (8).

#### 1.2 Assembly

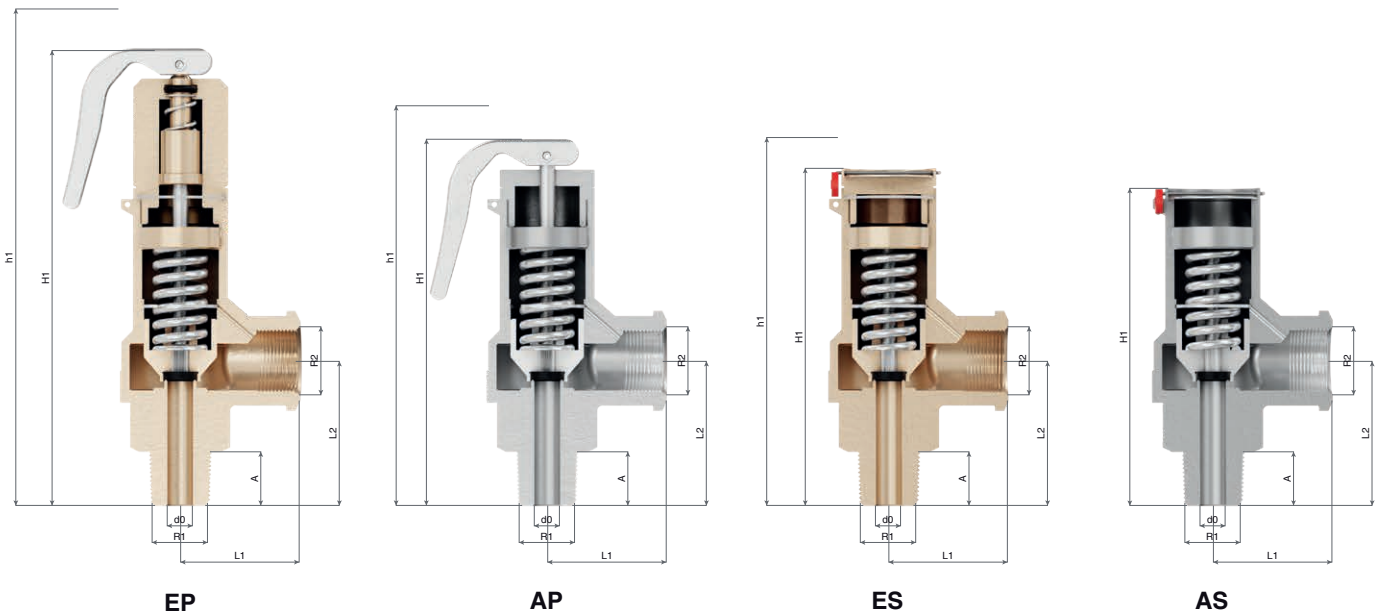
- A - Enter the spring (8) through the upper part of the rod (3).
- B - Screw the spring press (7) holding the rod (3).
- C - Adjust the set pressure with the spring press (7).

### 2. Adjusting the firing pressure

- A - Proceed according to points 1.1.A, 1.1.B.
- B - Proceed according to points 1.2.C.

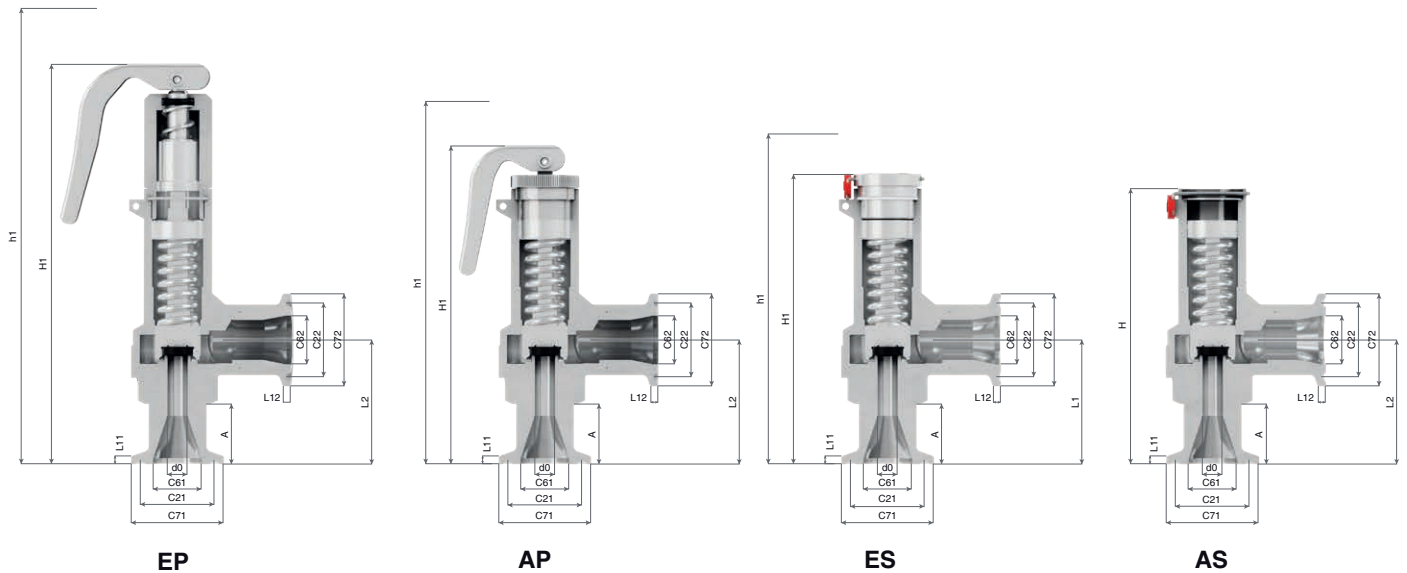
MODEL 695/895/995

R1 x R2		3/8" x 1/2"				1/2" x 1/2"				1/2" x 3/4"				
CONNECTIONS		Male thread x Female thread Gas Whitworth cylindrical ISO 228-1												
		MODEL 694												
DN1 x DN2		10 x 15				15 x 15				15 x 20				
CONNECTIONS		CLAMP ISO 2852:1993												
d0 [mm]	694/695/895	8,00								9,75				
	995	4,00												
Ao: $\frac{\pi \cdot d_0^2}{4}$ [mm <sup>2</sup> ]	694/695/895	50,26								74,66				
	995	12,57												
H [mm]	695/895	-	-	-	88	-	-	-	91	-	-	-	109	
	995	-	-	-	99	-	-	-	102	-	-	-		
	694	-	-	-	101	-	-	-	101	-	-	-	121	
H1 [mm]	695/895	136	102	93	-	139	105	96	-	164	127	116	-	
	995	147	113	104	-	150	116	107	-					
	694	149	115	106	-	149	115	106	-	176	139	128	-	
h1 [mm]	695/895	148	119	109	-	151	122	112	-	178	142	134	-	
	995	159	130	120	-	162	133	123	-					
	694	161	132	122	-	161	132	122	-	190	154	146	-	
A [mm]	695/895/995	9				12				12				
	694					22				24				
L1 [mm]	695/895/995					36				44				
	694					41,50				52				
L2 [mm]	695/895	32,50				36,50				45,50				
	995	43,50				46,50								
	694					45,50				57,50				
INLET FLANGE	PN-16 CLAMP ISO 2852:1993	C61	14				18,10				18,10			
		C71					34				34			
		C21					27,50				27,50			
		L11					2,85				2,85			
OUTLET FLANGE	PN-16 CLAMP ISO 2852:1993	C62					18,10				23,70			
		C72					34				50,50			
		C22					27,50				43,50			
		L12					2,85				2,85			
WEIGHT [kg]		EP	AP	ES	AS	EP	AP	ES	AS	EP	AP	ES	AS	
695/895/995	BRONZE	0,47	0,38	0,36	0,34	0,47	0,38	0,36	0,34	0,97	0,74	0,72	0,70	
	STAINLESS STEEL	0,45	0,36	0,34	0,32	0,45	0,36	0,34	0,32	0,95	0,72	0,70	0,68	
694	STAINLESS STEEL	0,5	0,41	0,39	0,37	0,5	0,41	0,39	0,37	1,06	0,83	0,81	0,69	
CODE	695	BRONZE 2002-695.	83810	838110	838120	838130	80210	802110	802120	802130	80211	802111	802121	802131
		STAINLESS STEEL 2002-695.	83820	838210	838220	838230	80220	802210	802220	802230	80221	802211	802221	802231
	895	BRONZE 2002-895.	83810	838110	838120	838130	80210	802110	802120	802130	80211	802111	802121	802131
		STAINLESS STEEL 2002-895.	83820	838210	838220	838230	80220	802210	802220	802230	80221	802211	802221	802231
	995	STAINLESS STEEL 2002-995.	03820	03821	03822	03823	00220	00221	00222	00223				
	694	STAINLESS STEEL 2002-694.	83820	838210	838220	838230	80220	802210	802220	802230	80221	802211	802221	802231



Model 695/895/995

MODEL 695/895/995														
R1 x R2		3/4" x 3/4"				3/4" x 1"				1" x 1"				
CONNECTIONS		Male thread x Female thread Gas Whitworth cylindrical ISO 228-1												
MODEL 694														
DN1 x DN2		20 x 20				20 x 25				25 x 25				
CONNECTIONS		CLAMP ISO 2852:1993												
d0 [mm]	694/695/895	9,75				13,00								
	995													
Ao: $\frac{\pi \cdot d_0^2}{4}$ [mm <sup>2</sup> ]	694/695/895	74,66				132,73								
	995													
H [mm]	695/895	-	-	-	112	-	-	-	138	-	-	-	141	
	995													
	694	-	-	-	121	-	-	-	148	-	-	-	148	
H1 [mm]	695/895	167	130	119	-	196	159	147	-	199	162	150	-	
	995													
	694	176	139	128	-	206	169	157	-	206	169	157	-	
h1 [mm]	695/895	181	145	137	-	210	174	165	-	213	147	168	-	
	995													
	694	190	154	146	-	220	184	175	-	220	154	175	-	
A [mm]	695/895/995	15				15				18				
	694	24				25								
L1 [mm]	695/895/995	44				60								
	694	52				67								
L2 [mm]	695/895	48,50				58,50				61,50				
	995													
	694	57,50				68,50								
INLET FLANGE PN-16 CLAMP ISO 2852:1993	C61	23,70				23,70				29,70				
	C71	50,50				50,50								
	C21	43,50				43,50								
	L11	2,85				2,850								
OUTLET FLANGE PN-16 CLAMP ISO 2852:1993	C62	23,70				29,70								
	C72	50,50				50,50								
	C22	43,50				43,50								
	L12	2,85				2,85								
WEIGHT [kg]		EP	AP	ES	AS	EP	AP	ES	AS	EP	AP	ES	AS	
695/895/995	BRONZE	0,97	0,74	0,72	0,70	1,67	1,35	1,33	1,31	1,67	1,35	1,33	1,31	
	STAINLESS STEEL	0,95	0,72	0,70	0,68	1,65	1,33	1,31	1,29	1,65	1,33	1,31	1,29	
694	STAINLESS STEEL	1,10	0,87	0,85	0,83	1,74	1,52	1,50	1,48	1,02	1,80	1,78	1,76	
CODE	695	BRONZE 2002-695.	83410	834110	834120	834130	83411	834111	834121	834131	81010	810110	810120	810130
		STAINLESS STEEL 2002-695.	83420	834210	834220	834230	83421	834211	834221	834231	81020	810210	810220	810230
	895	BRONZE 2002-895.	83410	834110	834120	834130	83411	834111	834121	834131	81010	810110	810120	810130
		STAINLESS STEEL 2002-895.	83420	834210	834220	834230	83421	834211	834221	834231	81020	810210	810220	810230
	995	STAINLESS STEEL 2002-995.												
	694	STAINLESS STEEL 2002-694.	83420	834210	834220	834230	83421	834211	834221	834231	81020	810210	810220	810230



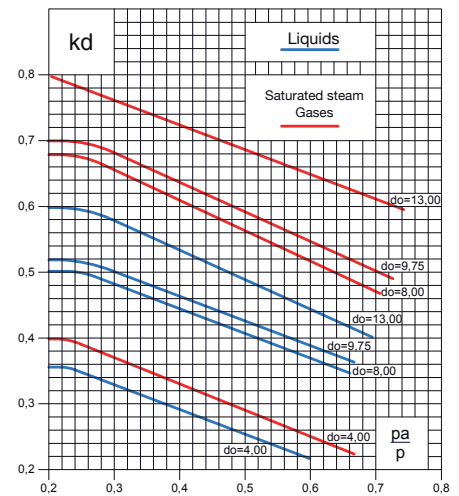
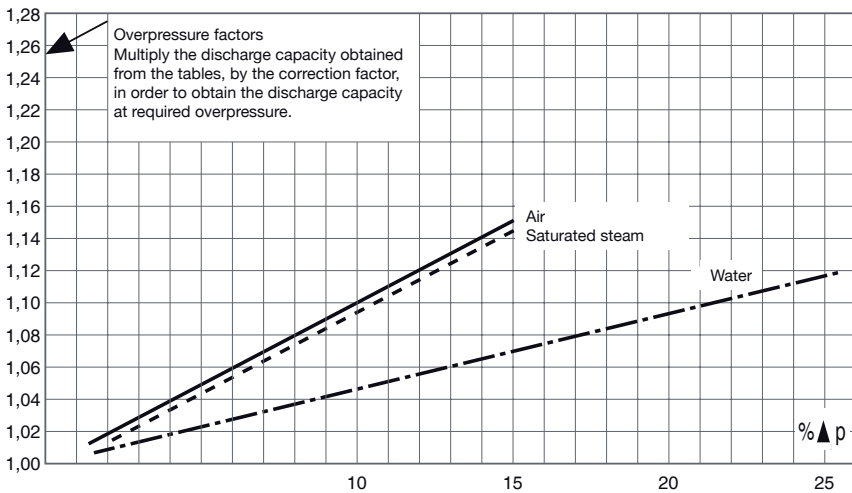
Model 694

SET PRESSURES AND REGULATING RANGES

MODELO		695/895/995/694						
ENTRY CONNECTION	695/895/995	R1	3/8"	1/2"	1/2"	3/4"	3/4"	1"
	694	DN1	10	15	15	20	20	25
EXIT CONNECTION	695/895/995	R2	1/2"		3/4"		1"	
	694	DN2	15		20		25	
d0 [mm]	695/895/694		8,00		9,75		13,00	
	995		4,00		-		-	
SET PRESSURE [bar]	MAXIMUM	695/895	PS 36 bar	36	36	36		
		995	PS 144 bar	144				
		694	PN-16	16	16	16		
	MINIMUM	695/895	PS 36 bar	0,2	0,2	0,2		
		995	PS 144 bar	36,1				
		694	PN-16	0,2	0,2	0,2		
SPRING REGULATING RANGE [bar]	695/895/694	995	-					
	0,20 to 0,70		CODE	56160	56169	56178		
	0,60 to 1,60		CODE	56161	56170	56179		
	1,50 to 3,50		CODE	56162	56171	56180		
	3,40 to 5,50		CODE	56163	56172	56181		
	5,40 to 10,00	36,10 to 40,00	CODE	56164-56334	56173	56182		
	9,80 to 15,00	39,00 to 60,00	CODE	56165-56335	56174	56183		
	14,50 to 20,00	58,00 to 80,00	CODE	56166-56336	56175	56184		
	19,00 to 25,00	76,00 to 100,00	CODE	56167-56337	56176	56185		
	24,00 to 36,00	96,00 to 144,00	CODE	56168-56338	56177	56186		

RECOMMENDED RANGES OF APPLICATION

MODEL		695/895/995/694				
		AP	AS	EP	ES	
FLUID	SATURATED STEAM		*	*	*	*
	GASES	INERT	*	*	*	*
		NON INERT			*	*
	LIQUIDS				*	*
OPENING PRESSURE IN % OF THE SET PRESSURE		+10%				
CLOSURE PRESSURE IN % OF THE SET PRESSURE		-10%				

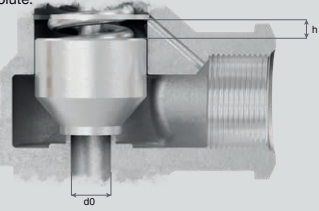


DISCHARGE CAPACITY													
MODEL		695/895									995		
ENTRY CONNECTION	R1	3/8"	1/2"	1/2"	3/4"	3/4"	1"	3/8"	1/2"				
EXIT CONNECTION	R2	1/2"		3/4"			1"		1/2"				
MODEL		694											
ENTRY CONNECTION	DN1	10	15	15	20	20	25						
EXIT CONNECTION	DN2	15		20			25						
d <sub>o</sub>		8,00			9,75			13,00			4,00		
A <sub>0</sub> = $\frac{\pi \cdot d_o^2}{4}$ [mm <sup>2</sup> ]		50,26			74,66			132,73			12,57		
p [bar]		I	II	III	I	II	III	I	II	III	I	II	III
0,5		30	34	924	45	51	1399	91	103	2870			
1,0		39	47	1306	59	71	1979	120	144	4059			
1,5		49	59	1600	73	88	2423	149	180	4971			
2,0		58	70	1848	87	106	2798	178	215	5740			
2,5		67	82	2066	101	124	3128	206	251	6417			
3,0		77	94	2263	115	141	3427	235	287	7030			
3,5		86	105	2444	129	159	3702	263	323	7593			
4,0		95	117	2613	143	176	3957	291	359	8117			
4,5		104	129	2771	157	194	4197	320	395	8610			
5,0		113	140	2921	171	212	4424	348	431	9076			
6,0		132	164	3200	198	247	4847	404	503	9942			
7,0		150	187	3457	226	282	5235	460	575	10738			
8,0		168	211	3695	253	318	5596	515	646	11480			
9,0		186	234	3919	281	353	5936	571	718	12176			
10,0		204	258	4131	308	388	6257	627	790	12835			
12,0		240	304	4526	362	459	6854	738	934	14060			
14,0		277	351	4888	417	529	7403	849	1077	15186			
16,0		313	398	5226	471	600	7915	960	1221	16235			
18,0		349	445	5543	526	670	8395	1070	1365	17220			
20,0		385	492	5843	580	741	8849	1182	1508	18151			
22,0		421	538	6128	635	812	9281	1293	1652	19037			
24,0		458	585	6400	690	882	9693	1404	1796	19884			
26,0		494	632	6662	745	953	10089	1516	1939	20696			
28,0		531	679	6913	800	1023	10470	1628	2083	21477			
30,0		567	726	7156	855	1094	10837	1740	2226	22231			
32,0		604	773	7391	910	1164	11193	1852	2370	22960			
34,0		641	819	7618	966	1235	11537	1965	2514	23666			
36,0		678	866	7839	1021	1306	11872	2079	2657	24352			
38,0											102	134	1363
40,0											105	141	1382
42,0											107	148	1400
44,0											110	155	1418
46,0											112	162	1435
48,0												169	1453
50,0												176	1470
52,0												182	1487
54,0												189	1504
56,0												196	1520
58,0												203	1537
60,0												210	1553
62,0												217	1569
64,0												224	1585
66,0												231	1601
68,0												238	1616
70,0												244	1632
72,0												251	1647
74,0												258	1662
76,0												265	1677
78,0												272	1692
80,0												279	1707
82,0												286	1722
84,0												293	1736
86,0												300	1751
88,0												306	1765
90,0												313	1779
92,0												320	1793
94,0												327	1807
96,0												334	1821
98,0												341	1835
100,0												348	1848
105,0												365	1902
110,0												382	1954
115,0												399	2005
120,0												417	2054
125,0												434	2103
130,0												451	2150
135,0												468	2196
140,0												485	2242
145,0												503	2286

COEFFICIENT OF DISCHARGE												
MODEL		695/895/995										
ENTRY CONNECTION	695/895/995	R1	3/8"	1/2"	1/2"	3/4"	3/4"	1"				
EXIT CONNECTION	694	DN1	10	15	15	20	20	25				
CONNECTION	695/895/995	R2	1/2"		3/4"			1"				
CONNECTION	694	DN2	15		20			25				
d <sub>0</sub>		695/895/694			8,00		9,75		13,00			
h		995			4,00		-					
h/d <sub>0</sub>		695/895/694			2,50		4,00		5,50			
COEFFICIENT OF DISCHARGE kd (1)		695/895/694			0,31		0,41		0,42			
		995			0,62		-					
		695/895/694			SATURATED STEAM GASES		0,68		0,69		0,79	
		995			LIQUIDS		0,40		-			
		695/895/694			0,51		0,52		0,60			
		995			0,35		-					

1) For set pressures less than 3 bar see graph of discharge coefficient.

pa = Backpressure permitted [bar] absolute.  
p = Set pressure [bar] absolute.  
cd = Coefficient of discharge.



- I - Saturated steam [kg/h].
- II - Air to 0 °C and 1.013 bar [Nm<sup>3</sup>/h].
- III - Water to 20 °C [l/h].

For other, not so dense liquids, other than water at 20 °C apply:

$$V_L = \sqrt{\frac{\rho_A}{\rho_L}} \cdot V_A \quad \text{ó} \quad V_A = V_L \cdot \sqrt{\frac{\rho_L}{\rho_A}}$$

V<sub>A</sub> = Water flow according to table.  
V<sub>L</sub> = Liquid flow.  
ρ<sub>A</sub> = Water density at a 20 °C.  
(ρ<sub>A</sub> = 998 kg/m<sup>3</sup>)  
ρ<sub>L</sub> = Liquid density.

ATTENTION: Flow rates according to UNE EN ISO 4126-7 with 10% overpressure.

## Características

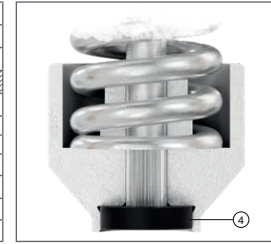
- 90° angular flow.
- Activated by direct action helicoid spring.
- Simplicity of construction ensuring minimum maintenance.
- Materials carefully selected for their resistance to corrosion.
- Internal body designed to offer favourable flow profile.
- Sealing surfaces balanced and making them extremely tightness, even exceeding API-527 requeriments.
- Great discharge capacity. For liquids typically used with openings similar to proportional safety valves.
- Auto-centering plug.
- Totally precise open and close.
- All the valves are supplied sealed at the set pressure requested, simulating operational conditions, and are vigorously tested.
- All components are numbered, registered and checked. If requested in advance, material, casting, test and efficiency certificates will be enclosed with the valve, and the instruction manual, in accordance with P.E.D. 2014/68/EU.

## IMPORTANT

1.- Fluorelastomer (Vitón) seals, Silicone's rubber, PTFE (Teflón) o Perfluorelastomer (FFKM).

Achieving leakage levels less than:  $0,3 \times 10^{-3} \frac{\text{Pa cm}^3}{\text{seg.}}$

RANGE OF APPLICATION FOR THE SEALS	
FLUID	SET PRESSURE [bar]
	0,20 1,80 4,80 20,00 30,00 36,01 45,00 144,00
Saturated steam	S V K T
Liquids and gases	S V K T
SEALS	TEMPERATURE [°C]
	MINIMUM MAXIMUM
Silicone's rubber S	-50 200
Fluorelastomer (Viton) V	-20 220
PTFE (Teflon) T	-196 260
Perfluorelastomer (FFKM) K	-10 230



Depending on demand:

1. Buna-nitrils seals, Butyl, Natural rubber, E.P.D.M., Chlorosulphonate polyethylene (Hypalon), Neoprene, etc.
2. Possibility of manufacture in other types of material, for use in special working conditions (high temperatures, fluids, etc.).



[www.vycindustrial.com](http://www.vycindustrial.com)

+34 93 735 76 90 | 119 | info@vycindustrial.com

Avenc del Daví, 22 | Pol. Ind. Can Petit | 08227 · Terrassa (Barcelona) España

Informative brochure, without obligation and subject to our General Sales Conditions.